

All industrial machinery, equipment and vehicles work under abrasive operating conditions. Wear due to friction between parts reaches its highest level in these conditions. Machinery is exposed to bad weather, dust, and heavy loads in most cases. Consequently unwanted breakdown occurs and productivity loss is inevitable.

Using an Automatic Lubrication System increases your profitability by minimising issues related to insufficient lubrication. The ETI Power Max progressive automatic lubrication system completely takes over the work load spent on manual lubrication with a system which brings together a pump, control unit, distributor valve, hose and fittings.

Lubrication is vitally important for all moving parts, but using the correct lubrication system and method protects parts from long term wear, and will ensure the parts are free from premature wear and or damage. Feeding lubrication points with the correct dosage of lubricant at predetermined intervals while machinery is operating, provides optimum lubrication of the parts keeping the lubricant film in place longer. Using the ETI Power Max Progressive Automatic Lubrication System, protects the lifetime of your parts, reduces downtime whilst enhancing profitability.



With over 18 years experience of manufacturing Fire Suppression and Automatic Lubrication Systems, PT.ETI Fire and Lubrication is able to provide a wide ranging professional approach to select the correct Automatic Lubrication System for various industries and machinery. Using the latest in computer controlled (CNC) milling technology, ETI both meets and exceeds worlds best practice.



A highly accurate and precise manufacturing process is involved in producing Automatic Lubrication Systems in order that the product meets the most stringent quality procedures.

PT. ETI Fire and Lubrication presents high quality and advanced product design concepts to customers worldwide through strong brand identification.

PT.ETI Fire and Lubrication creates new opportunities and innovative solutions. As a result of the satisfaction of our customers with our quality automatic lubrication system, we are continuing to grow in the national and international market and are one of the most successful companies in the field.



ETI POWER MAX - Automatic Lubrication Progressive System

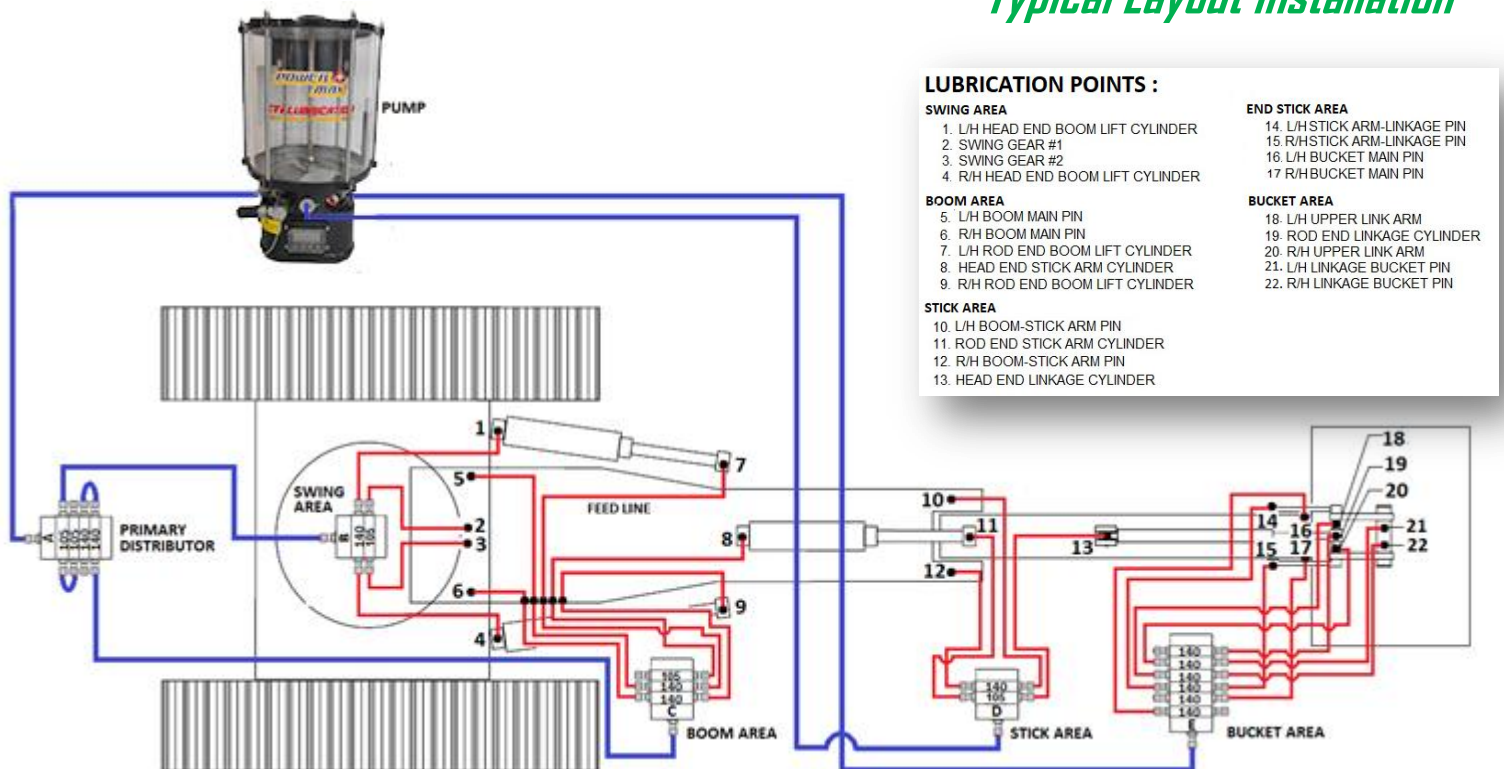
The ETI Power Max fully automated lubrication systems with power supplied by 12/24 VDC or 220/380 VAC. An automated lubrication system typically dispenses small measured amounts of lubricant at frequent intervals while production machines are operating. The Electric pump incorporates an integrated timer for easy operation, installation and maintenance. An additional remote manual push button for easy operation is incorporated.



The ETI Power Max is a single line progressive system using lubricant flow to cycle individual metering valves. The valves consist of dispensing pistons moving back and forth in a specific bore. Each piston depends on flow from the previous piston to shift and displace lubricant. The operation begins when the controller/timer sends a signal to the Pump to start the lube event. The pump then feeds lubricant into the grease main line which connects to the primary distributor valve. Lubricant is fed to the multiple lubrication points one after another via the secondary progressive distributor valve.

The Picture sample and typical layout installation shown for 20-30 Ton Excavator

Typical Layout Installation



Lubricant Type : GREASE

NLGI classes that can be used with Power Max pumps are described below. Because of the flow characteristics of grease, the NLGI class range should be changed to suit different weather and temperature conditions.

NLGI 0 grease recommended working temperatures are between -10°C and 10°C

NLGI 1 grease recommended working temperatures are between 10°C and 20°C

NLGI 2 grease recommended working temperatures are between 20°C and 50°C

GENERAL SPECIFICATIONS	
Reservoir Capacity	4 - 6 - 8 - 10 - 15 - 20 Kg
Pump Power Supply	12/24 VDC – 220/380 VAC
Operating Pressure	Maximum 4000Psi (300BAR)
Operating Temperature	-20°C a + 100°C
Pump Elements	1 up to 3 pump elements
Pump Element displacement	(Ø 6mm) 2.5 cm ³ /minute (Ø 6mm) 5.0 cm ³ /minute
Lubricant Type	Grease NLGI-00 up to NLGI-2
Enclosure Rating	IP67. (Protected from high pressure water spray)
Pause time adjusting	1 minute - 90 Hours
Run time adjusting	1 minute - 90 Minutes
Warnings	Fault, Alarm/Buzzer/Fuse

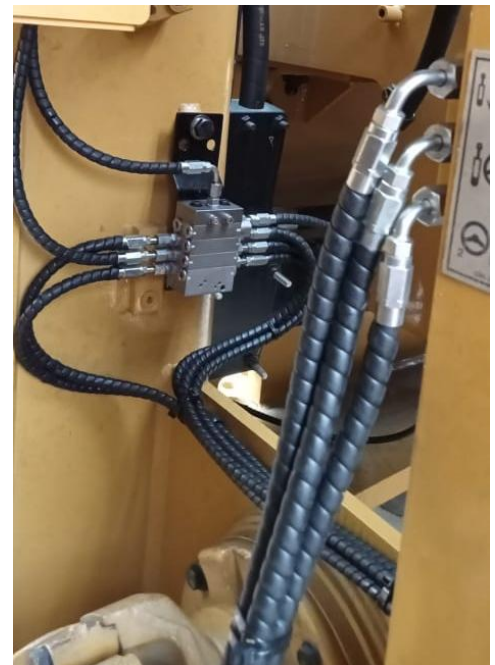
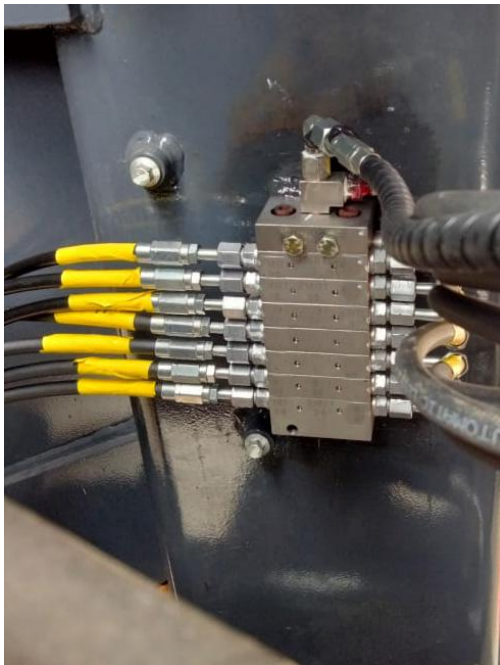
Power Max Grease Pump



Power Max Grease Distributor Valves



GENERAL SPECIFICATIONS	
Max. Working Pressure	4000 Psi
Min. Operating Pressure	1200 Psi
Grease Type	NLGI – 00, 01, 02.
Mounting Screw	M6 Allen Screws
Operating Temperature	-20°C + 100°C
Outlet Thread	M10 x 1
Outlet Variations	From 4 outlet to 14 outlet can be created in single distributor block
Distributor (Piston) Outlet	(Ø 4mm) 045mm ³ /stroke (Ø 6mm) 105mm ³ /stroke (Ø 8mm) 140mm ³ /stroke
Modular Element	3 x minimum middle element valves 6 x maximum middle element valves



ETI POWER MAX - Automatic Lubrication Progressive System

Hose Fittings & Adaptors



Power Max Applications

The ETI Power Max systems have proven to be right solution for many industries and applications, eliminating costly downtime. Examples include :

MOBILE EQUIPMENT

- Excavator
- Wheel Loaders
- Haulers
- Motor Graders
- Off Road Tractors
- Trucks of all types
- Multiple Axxle Trailler
- Hydraulic Hammers
- Street Sweepers
- Buses
- Etc

INDUSTRIAL EQUIPMENT

- Cement Plant
- Dewatering
- Handling Equipment
- Wood Processing
- Wind Energy
- Turbine
- Printing & Packaging
- Beverage Industry
- Plastic Processing
- Paper Plant
- Food/Bakery
- Lathes
- Textile
- Etc



Power Max Benefits

- Positive delivery of a measured quantity of lubricant guaranteed
- Long operational life assured by a careful selection of high grade material
- System design flexibility due to large range and combination of sizes
- Suitable for system functioning control
- Operation monitor with indicators and/or contact plugs



PT. ETI FIRE & LUBRICATION SYSTEMS



JL. Magelang – Kopeng Km.11, Tegalrejo – Magelang
Central Java – Indonesia.



+62 293 314 89990, Fax: +62 293 314 8991



info@etifireandlubrication.com



www.etifireandlubrication.com

